

Ducted warm air heating

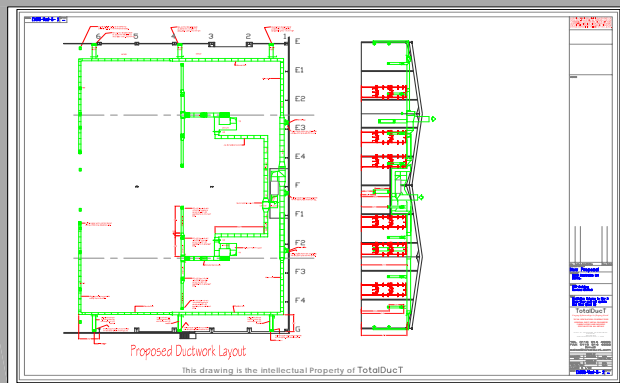


250,000 ²ft Distribution warehouse for Marks and Spencer retailing. This project involved the re-configuration of the existing ducted warm air supply, to accommodate the provisions of a new ITS clothing rail sorting system.

Three mezzanine levels occupying 30,000 ²ft of existing floor space involved close co-ordination of ITS systems with sprinklers, electrical, and heating trades.



CAD drawings by **TOTALDUCT** coordinated the trades. This £60,000 project was completed in 6 weeks from start to finish.



TOTALDUCT
UNIT 41 WILFORD INDUSTRIAL EST
WILFORD, NOTTINGHAM. NG11 7EP
TEL 0115 914 4885 FAX 0115 914 4886
EMAIL - SALES@TOTALDUCT.COM
Design and Build Air Movement and Fabrication Specialists.

Client:-
Exel Distribution
Location:-
Enfield

Forging Relationships in Shaping Metal

Ventilation

Project profile